



# SAETA

ACCESSORI \_ Accessories \_ Accessoires \_ Accessoires

Sottile, discreta ma nel contempo di carattere. Realizzata in alluminio verniciato, disponibile nei colori di tendenza.

**SAETA** è perfettamente abbinabile alla serie **ACRUX** di **SAMO**.

A range of accessories and furniture characterized by an industrial style, suitable for modern and metropolitan environments.

**SAETA** perfectly complements the **ACRUX** series by **SAMO**.

Une série d'accessoires au style industriel, adaptée aux environnements modernes et urbains.

**SAETA** s'harmonise parfaitement avec la série **ACRUX** de **SAMO**.

Eine Serie aus Zubehör, Möbeln und Ergänzungselementen im Industrial-Stil, die sich für ein modernes und weltstädtisches Ambiente eignet.

**SAETA** passt perfekt zur **ACRUX**-Serie von **SAMO**

## Finiture \_ Finishes \_ Finitions \_ Afwerkingen

### Verniciato bianco

Painted white  
laqué blanc  
Lackiertem Weiß



**.09**

### Verniciato nero

Painted black  
laqué noir  
Lackiertem Schwarz



**.23**

### Artic opaco

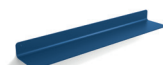
Artic matt  
Mat Artic  
Matt Artic



**.90**

### Sailor blue opaco

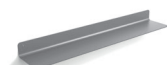
Sailor blue matt  
Mat Sailor blue  
Matt Sailor Blue



**.92**

### Grigio opaco

Grey matt  
Mat gris  
Matt Grau



**.95**

### Sabbia opaco

Sand matt  
Mat sable  
Matt Sand



**.98**

### Tortora opaco

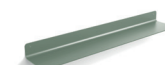
Tortora matt  
Mat tortora  
Matt tortora



**.99**

### Sage opaco

Sage matt  
Mat sage  
Matt Sage



**.73**

### Ambra opaco

Ambra matt  
Mat ambra  
Matt Ambra



**.86**

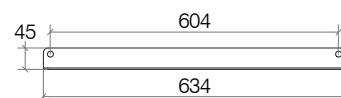
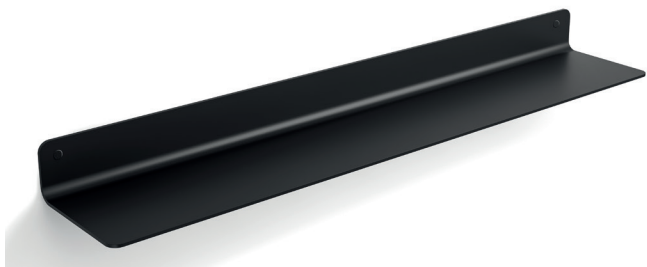





# SAETA

## 51818

### Mensola 634 mm

Shelf 634 mm / Tablette 634 mm / Ablage 634 mm



<b>cod. 51818</b>	 <b>1,080</b>	 <b>4,680</b>	 <b>1</b>	Verniciato nero Painted black Laqué noir Lackiertem schwarz
<b>EAN 8057725061344</b>	<b>1,080</b>	<b>4,680</b>	<b>1</b>	

Peso e volume lordo / Gross weight and volume / Poids et volume brut / Bruttogewicht und Volumen



Fissaggio a muro  
Wall mounting with screws  
Fixation murale par vis  
Wandbefestigung mit Schraube



Made in Italy  
Made in Italy  
Made in Italy  
Made in Italy

#### PULIZIA e MANUTENZIONE

Pulire con un sapone neutro, applicare con un panno umido, strofinare leggermente, lasciar agire brevemente e quindi sciacquare con acqua. Infine lucidare con un panno morbido e asciutto. Per macchie di calcare pulire con una soluzione di acqua (80%) e aceto bianco (20%), per un'azione igienizzante aggiungere alla soluzione del bicarbonato di sodio. Asciugare sempre la superficie in modo da evitare le macchie derivanti dall'acqua.

Avvertenze: La resistenza alla corrosione al nichel-cromo si riduce sotto l'azione di acidi e composti alogenati (cloruri, bromuri, ioduri). Non utilizzare mai soluzioni a base di cloro (candeggina), detersivi o spugne abrasive. Evitare la ruggine causata da materiali esterni (ad es. paglietta di acciaio ecc.).

#### CARE and MAINTENANCE

Clean with a mild soap, apply with a damp cloth, rub lightly, leave it briefly and then rinse with water. Finally polish with a soft, dry cloth. To remove the limestone stains, clean with a solution of water (80%) and white vinegar (20%), to sanitize add baking soda. Always dry the surface in order to prevent stains caused by water. Warnings: The corrosion resistance of the steel is reduced by acids and halogen compounds (chlorides, bromides, iodides). Never use solutions containing chlorine (bleach), detergents or abrasive sponges. Prevent rust caused by external materials (eg. Scouring steel, etc..).